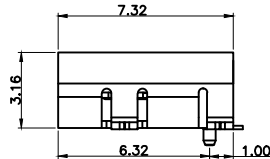
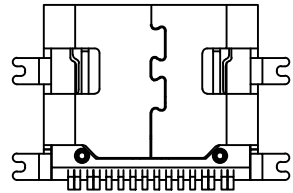
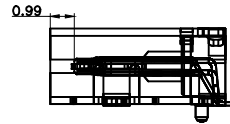
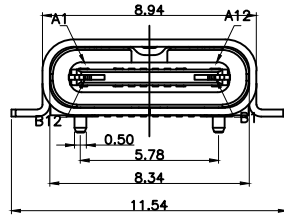
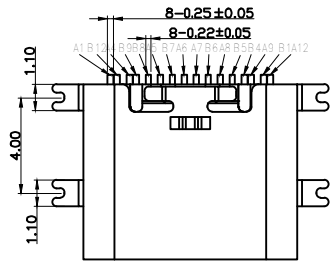


RECOMMEND P.C.B LAYOUT(COMPONENT SIDE)
TOLERANCE FOR PCB LAYOUT IS ± 0.05



| | | | |
|-----|------|-----|------|
| A1 | GND | B12 | GND |
| A2 | | B11 | |
| A3 | | B10 | |
| A4 | VBUS | B9 | VBUS |
| A5 | CC1 | B8 | SBU2 |
| A6 | DP1 | B7 | DN2 |
| A7 | DN1 | B6 | DP2 |
| A8 | SBU1 | B5 | CC5 |
| A9 | VBUS | B4 | VBUS |
| A10 | | B3 | |
| A11 | | B2 | |
| A12 | GND | B1 | GND |

| CUSTOMER DRAWING | | |
|----------------------|------------|-------|
| UNITS | SCALE | SHEET |
| mm | 1:1 | |
| PROJECTION: | DRAW: DAP | |
| | | |
| GENERAL TOLERANCE | CHECK: HWT | |
| X.X ±0.30 X.* ±10* | APPD: HHM | |
| .XX ±0.20 .X* ± 8* | | |
| .XXX ±0.10 .XX* ± 5* | | |

| | | |
|--|-----------|---------------------|
| 铭创科技(东莞)有限公司 Mingchuang Technology (Dongguan) Co., Ltd. | | |
| TITLE TYPE-C母座 16PIN板上 四脚全贴SMT L=7.35 三模 | | |
| MAT'L | SEE TABLE | FINISH SEE TABLE |
| DWG. NO. A011602B | PART NO. | SIZE A4 |

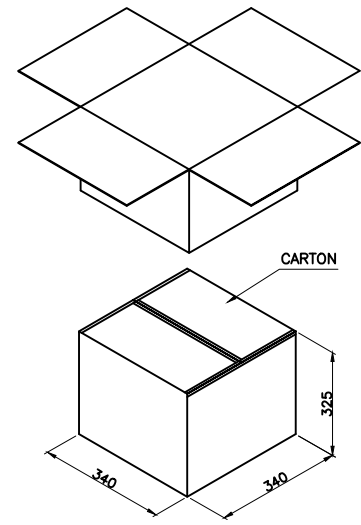
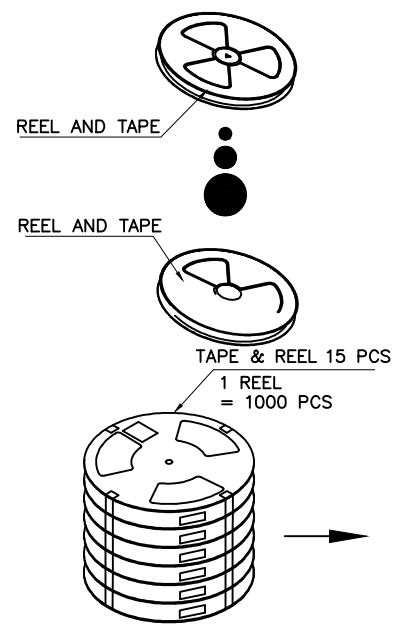
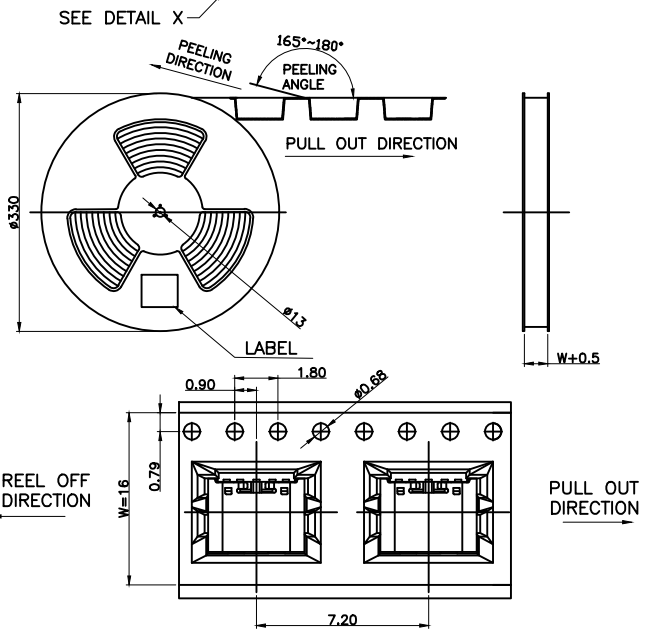
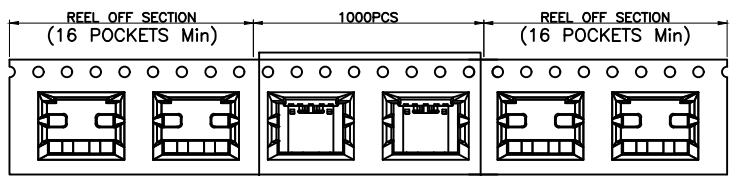
NOTE:

- 备注:
1.MATERIAL SPECIFICATION:
1.材料规格:
1-1.HOUSING:HIGH TEMPERATURE RESISTANT PLASTIC,UL94 V-0.
1-1. 外壳材料: 高温塑胶, 防火等级UL94 V-0
1-2.TERMINAL: COPPER ALLOY
1-2. 端子材料: 铜合金
1-3.FRONT SHELL: STAINLESS STEEL
1-3. 外壳材料: 不锈钢
1-4.MID PLATE: STAINLESS STEEL
1-4. 中夹片: 不锈钢
2.PLATING SPECIFICATION:
2.电镀规格:
2-1.TERMINAL:
2-1. 端子:
Ni 50u" MIN. UNDER PLATED OVER ALL.
镀镍底 50u" MIN.
Au PLATED 0.5~1u" OVER Ni
表面刷金0.5~1u"
2-2.FRONT SHELL:
2-2. 外壳:
Ni 50u" MIN. PLATED OVER ALL.
镀镍底 50u" MIN.
3.MECHANICAL PERFORMANCE,
3.机械性能:
3-1.INSERTION FORCE: 0.5~2.0kgf.
3-1. 插入力: 0.5~2.0kgf.
3-2.REMOVAL FORCE: 0.6kgf~2.0kgf.
3-2. 拔出力: 0.6kgf~2.0kgf.
3-3.DURABILITY: 10000 CYCLES.
3-3. 插拔寿命: 10000次
4.ELECTRICAL PERFORMANCE,
4.电气性能:
4-1. VOLTAGE RATING: 5.0V DC/AC
4-1. 额定电压: 5.0V DC/AC
CURRENT RATING: 3.0A
额定电流: 3.0A
4-2. LLCR: 50mΩ/PIN MAX.
4-2. 接触阻抗: 50mΩ/PIN MAX.
4-3.INSULATION RESISTANCE: 100MΩ MIN
4-3. 绝缘阻抗: 100MΩ MIN
4-4.DIELECTRIC WITHSTAND VOLTAGE,AC 100V FOR 1 MINUTE.
4-4. 耐压: AC 100V FOR 1 MINUTE.
5. ENVIRONMENTAL PERFORMANCE:
5. 环境特性:
OPERATING TEMPERATURE: -25°C~+85°C.
工作温度: -25°C~+85°C.



| | | | |
|-----|-------------|------|----------|
| REV | DESCRIPTION | DATE | APPROVED |
| | | | |

包装规范 / PACKING SPECIFICATION



| | | | | | |
|---|---------------|-------|--|---------------------|------------|
| CUSTOMER DRAWING | | | 铭创科技(东莞)有限公司 | | |
| UNITS mm | SCALE 1:1 | SHEET | Mingchuang Technology (Dongguan) Co., Ltd. | | |
| PROJECTION: | DRAW: DAP | | TITLE TYPE-C母座 16PIN板上 四脚全贴SMT L=7.35 三模 | | |
| GENERAL TOLERANCE X.X ±0.30 X.* ±10° .XX ±0.20 .X* ± 8° .XXX ±0.10 .XX* ± 5° | CHECK: HWT | | MAT'L SEE TABLE | FINISH SEE TABLE | |
| | APPD: HHM | | DWG. NO. A011602B | PART NO. _____ | SIZE A4 |